



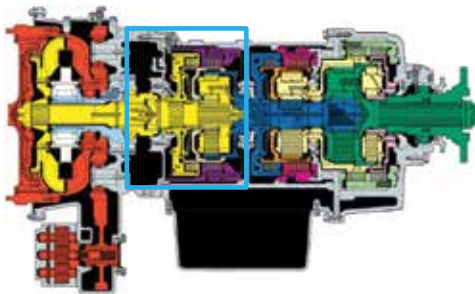
# NOW AVAILABLE S9820 TO 98230FS CONVERSIONS



CONTACT US TODAY!

[www.stewartandstevenson.com/locations](http://www.stewartandstevenson.com/locations)

Stewart & Stevenson, authorized Allison Transmission distributor, has available Allison Conversion Kits for converting existing Allison S9820 transmissions into the new 9823 OFS configurations at the time of overhaul. The kit contains all unique 9823 OFS parts, including new main and rear cases. Stewart & Stevenson will customize the conversion/overhaul to each customer's specific needs.



New 9823 OFS Model

### Redesigned Unit Stands Up to Oilfield Pumping Applications

The redesigned parts in the kit have been tested and are proven to stand up to extreme oilfield pumping applications. All installations will require the use of a viscous driveline damper at the pump. Minor modifications to the installation that may be required at the time of the conversion include:

- Driveshaft length
- Brake mounts
- Driveline guards

### Warranty

Each converted transmission will come with a six-month, unlimited hour warranty that will be honored at multiple Allison Off-Highway service locations.

Contact your local Stewart & Stevenson representative today for pricing on a conversion/overhaul plan customized to meet your needs.

Former Splitter Shaft



New Splitter Shaft

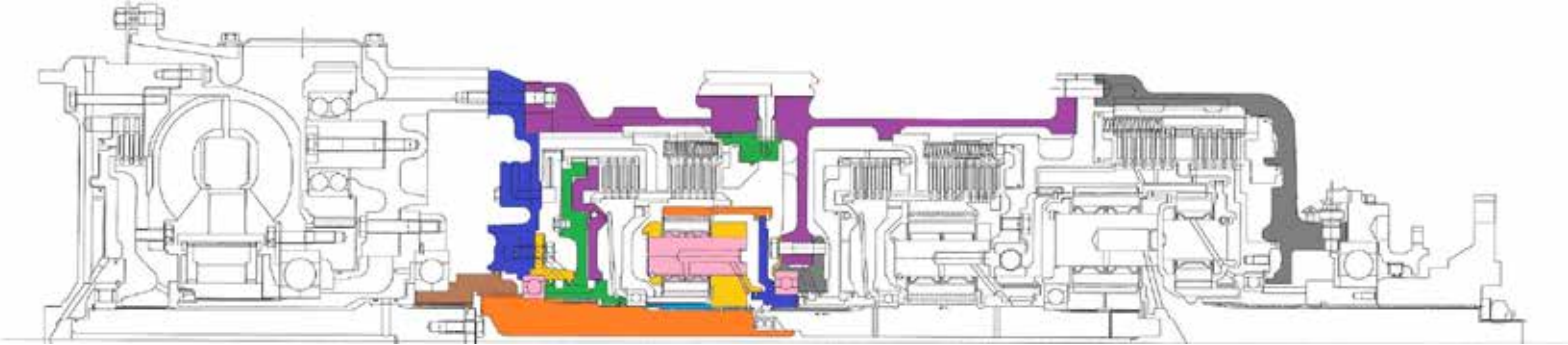


# WHAT CHANGED?



www.stewartandstevenson.com

## ARCHITECTURE CHANGES



### SPLITTER SECTION

#### New Components

- Splitter Input Shaft
- Splitter Ring Gear Hub
- Center Bearing
- Input Bearing Retainer
- Main Case  
(1" Length Increase)

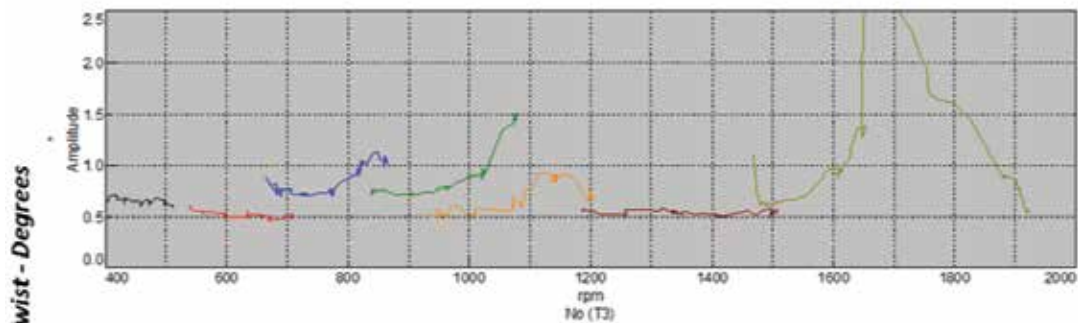
### OUTPUT SECTION

#### New Components

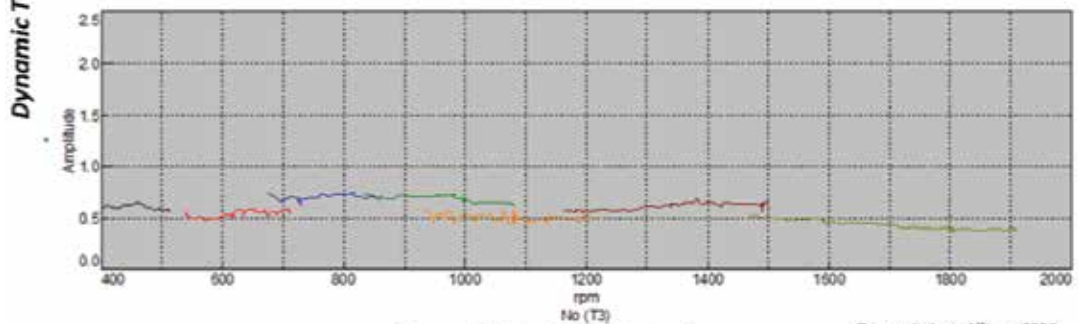
- Rear Cover

## TORSIONAL REDUCTIONS WITH A DAMPER

*Hydraulic Choke Testing -Typical "Turbine to High Clutch Twist Comparisons"*



**BEFORE**



**AFTER**

Transmission Output Speed - rpm

Transmission: Allison 9820  
Engine: MTU 12V4000 Tier 2  
Pump: Weir SPM QWS 2500